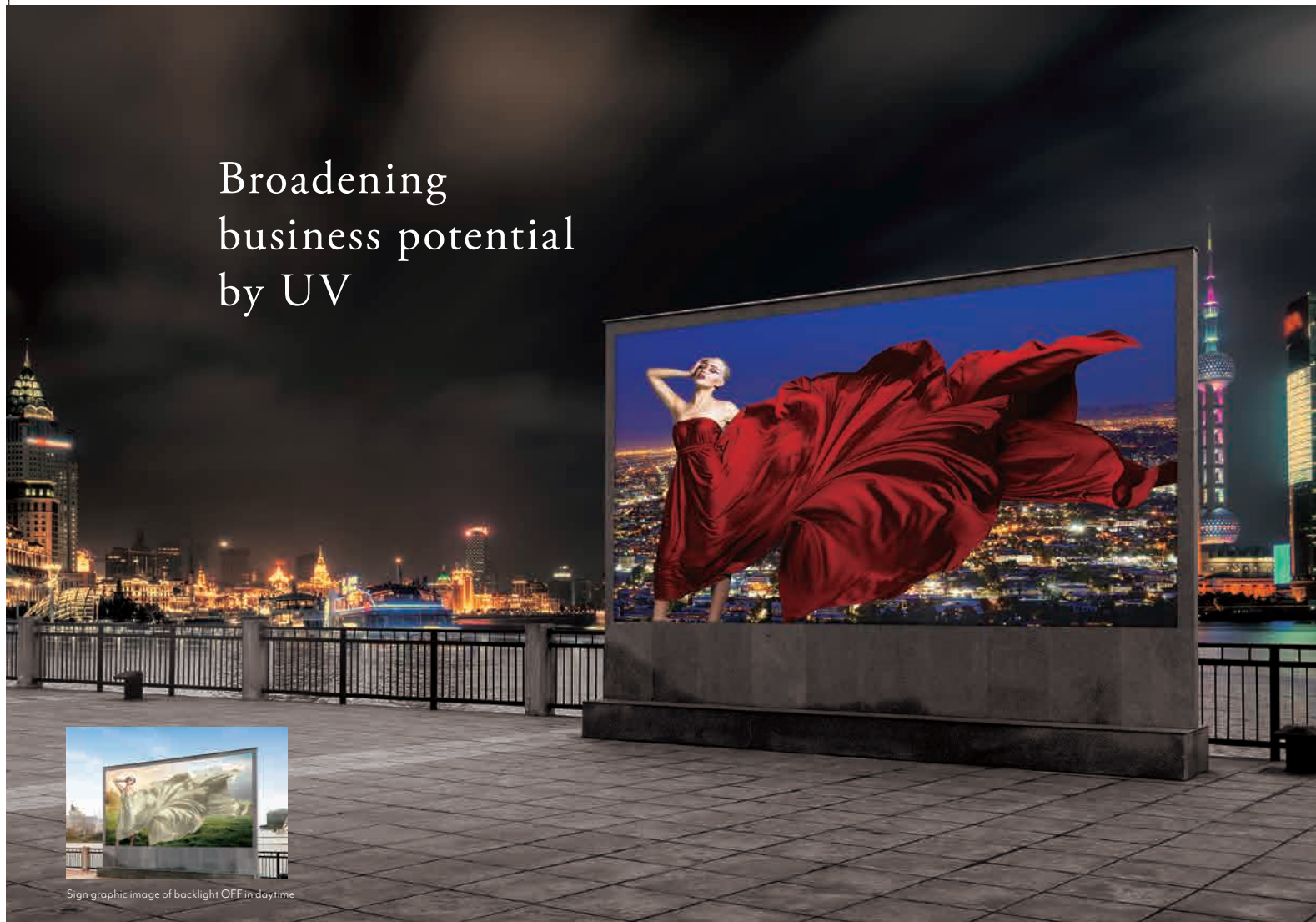




Broadening  
business potential  
by UV



Sign graphic image of backlight OFF in daytime



### Specifications

Item	UCJV300-160	UCJV150-160
Print head	On-demand piezo head	
Print resolution	300 dpi, 600 dpi, 900 dpi, 1,200 dpi	
Max. print width	1,610 mm (63.4 in)	
Max. media width	1,620 mm (63.8 in)	
Ink	Type	LED-UV ink LUS-170
	Color	4C (C, M, Y, K) 7C (C, M, Y, K, Lc, Lm, W)
	Capacity	1L (Bottle supply)
Media thickness	1.0 mm or less	
Media roll weight	40 kg (88.2 lb) or less	
Media roll outer diameter	φ250 mm (9.8 in) or less	
Cut speed	Max. 300 mm/s (420 mm/s at 45 degrees direction)	
Cut pressure	10 - 450 gf	
Cutter types	Eccentric cutter, Blade for small character, Blade for reflective sheet Blade for fluorescent sheet, Blade for PVC with low-pressure	
Interface	USB2.0 / Ethernet 1000 BASE-T	
Safety standard	VCCI Class A / FCC Class A / Compliant with UL 60950-1, ETL / CE Marking (EMC, Low Voltage, Machinery Directive), RoHS / CB Report / REACH • ENERGY STAR / RCM	
Power supply	Single phase (AC100 - 120 / 200 - 240 V) 10%, 50/60 Hz 1 Hz) x2	
Power consumption	AC100V: 1.44 kW / AC200 V: 1.92 kW x 2 or less	
Operational environment	Temperature	20 - 30 degC (68 - 86 degF)
	Humidity	35 - 65% Rh (Non condensing)
	Recommended temperature	20 - 25 degC (68 - 77 degF)
	Temperature gradient	±10 degC (±50 degF)/h or less
Dust level	Equivalent to normal office level	
Outside dimension (W x D x H)	2,900 x 776 x 1,475 mm (114.2 x 30.6 x 58.1 in)	
Weight	188 kg (414.5 lb)	183 kg (403.4 lb)

\* Specifications, designs and dimensions stated in this list may be subject to change without notice due to technical improvement etc.

### Supplies

Product name	Color	Item code	Remarks
LED-UV ink LUS-170	Cyan	LUS17-C-BA	1L bottle
	Magenta	LUS17-M-BA	
	Yellow	LUS17-Y-BA	
	Black	LUS17-K-BA	
	White	LUS17-W-BA	
	Light Cyan	LUS17-LC-BA	
Light Magenta	LUS17-LM-BA		

### Software

Newly upgraded RIP software with higher functionality and more user-friendliness

## RasterLink 6 PLUS

Added useful functions

- ▶ ID Cut for consecutive cutting
- ▶ Multi-layers print for wider expressiveness
- ▶ Braille print for easy operation of braille print.

PDF including transparent effect is applicable.  
 ▶ PDF data image with transparent effect is faithfully printable as the original.

For  
SIGN  
GRAPHICS

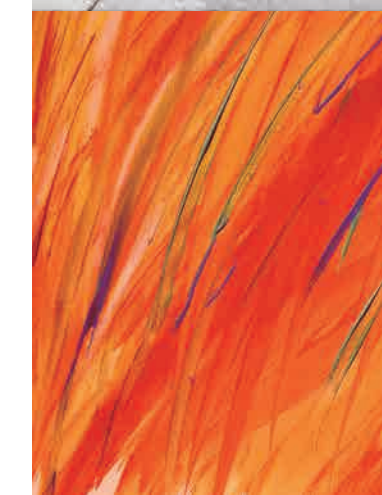
Print & Cut LED-UV Curable Inkjet Printer



# UCJV300-160 UCJV150-160



Leading the Future of Sign Graphics through  
UV Innovation



High-spec model with 4 layers print  
**UCJV300-160**



High-spec model with 4 layers print  
in addition to UV-LED, Print & Cut.  
It is a versatile model widely supporting job by short delivery time  
to advertisement sign with leading design.

Entry model with UV-LED  
**UCJV150-160**

Excellent model focused to UV-LED printing technology  
and Print & Cut function with high cost-performance.  
It can meet various demands of customers quickly.



●Some of samples in this catalogue are artificial renderings. ●Specifications, design and dimensions stated in this catalogue may be subject to change without notice for technical improvements etc.  
●The corporate names and merchandise names written in this catalogue are the trademark or registered trademark of the respective corporations. ●Inkjet printers print using extremely fine dots, so colors may very slightly vary after replacement of print heads. ●Also note that if using multiple printer units, colors could vary slightly from one unit to others(s) due to slight individual differences.

**Mimaki** MIMAKI ENGINEERING CO., LTD.  
2182-3 Shigeno-otsu, Tomi-city, Nagano 389-0512, Japan  
Tel. +81-268-64-2281

### Mimaki Global Network

USA	MIMAKI USA, INC.	Europe	MIMAKI EUROPE B.V.
Brazil	MIMAKI BRASIL COMERCIO E IMPORTACAO LTDA	Indonesia	PT. MIMAKI INDONESIA
India	MIMAKI INDIA PRIVATE LIMITED	Australia	MIMAKI AUSTRALIA PTY. LTD.
Taiwan	MIMAKI ENGINEERING (TAIWAN) CO.,LTD.	China	SHANGHAI MIMAKI TRADING CO.,LTD.
Singapore	MIMAKI SINGAPORE PTE. LTD.		

DB10339-02



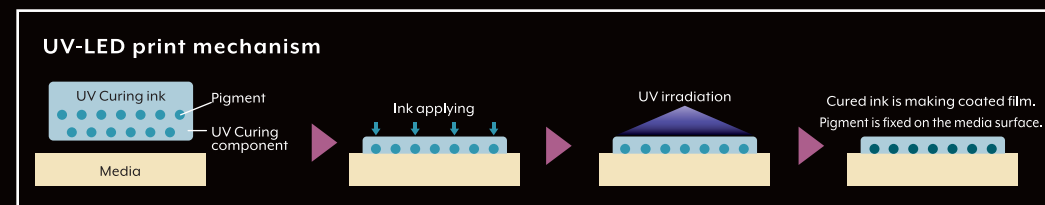
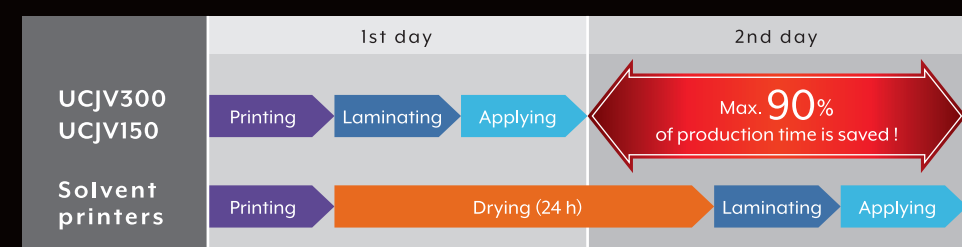


# UCJV300-160 UCJV150-160

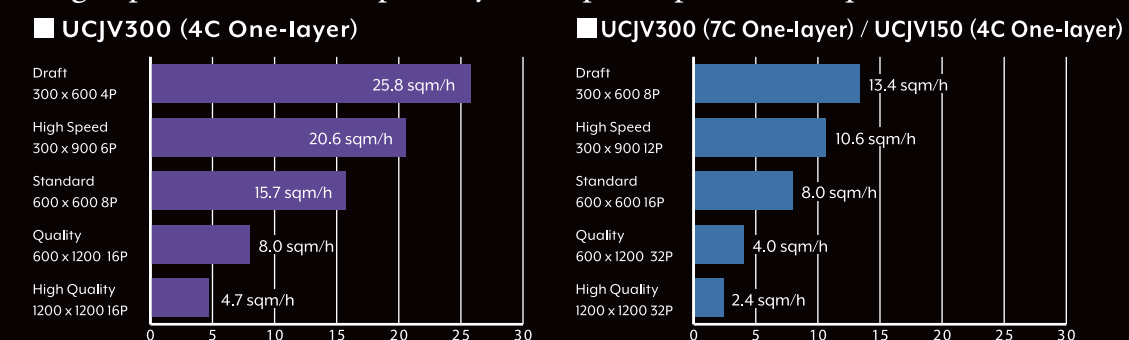
Leading the Future of Sign Graphics through  
**UV Innovation**

## Immediate processing and deliver are available by UV-LED.

With the UV ink property of immediate curing upon UV light irradiation, no drying time is required. The post-processing and sign applying are possible instantly. Required time for production is saved to be possible to undertake even an order of tight scheduled work. It is immune from ink blocking while printing by multi layers or using white ink. There is no necessity to mind media stains nor to attend by operator.



## High speed ! UV-LED print by max. print speed 25.8 sqm/h



## Possible to print the wider range of materials ! Broadening application.

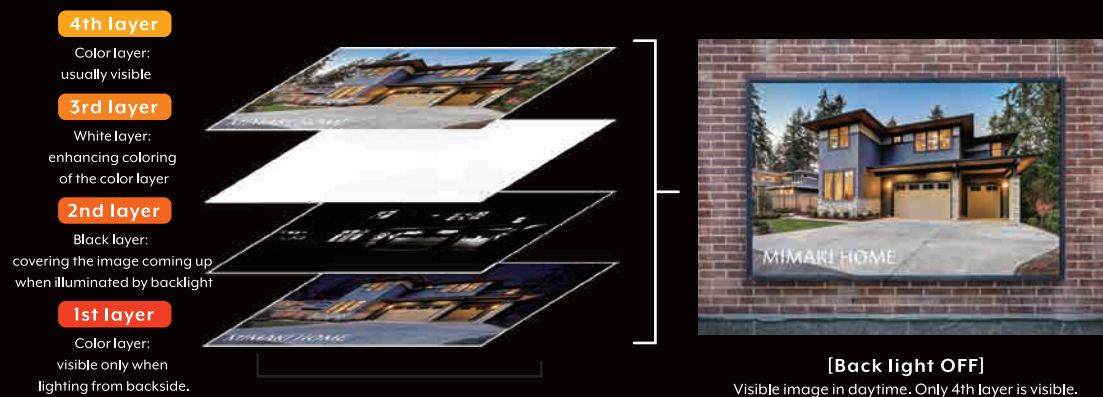
UV ink is printable to PVC and tarpaulin which are compatible with solvent, as well good matching with fabric, non specified ink-receiving paper and PET. More varied applications with UCJV300-160 due to mountable white ink.



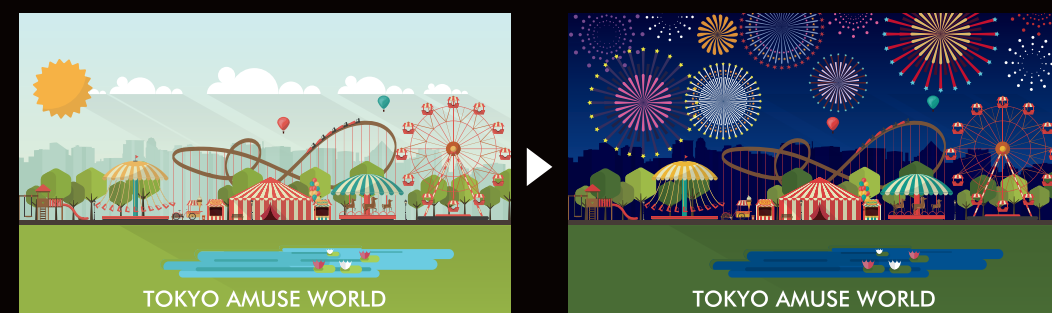
## Design is changing with backlight, [Day & Night Printing]

A very new advertising expression with showing different image effect between daytime and nighttime which can be created by 4 layers print\*. [Day & Night Printing], a visible design change is presented by backlighting of 4 layers print of [Color]+[Black]+[White]+[Color]. A proposal of highly designed sign can be put forward without any retouches of current simple light box but just ON/OFF of internal lamp. It can make a graphic change or an illumination of specified area etc.

\* 4 layers print is available only to UCJV300-160 that white ink is mounted.



[Back light ON]  
Visible image in nighttime. By backlighting, the color image of 1st layer is coming up.



## The pre-check of final image is possible by [RasterLink6Plus]

The final image of 4 layers print is available on the monitor of Illustrator operation by [RasterLink Tools], the Plug-in tool of Adobe Illustrator of Mimaki RIP software [RasterLink6Plus]. The check of ON/OFF image of inside lighting before print is available by the monitor of PC. It saves retry of print to reduce media losses.



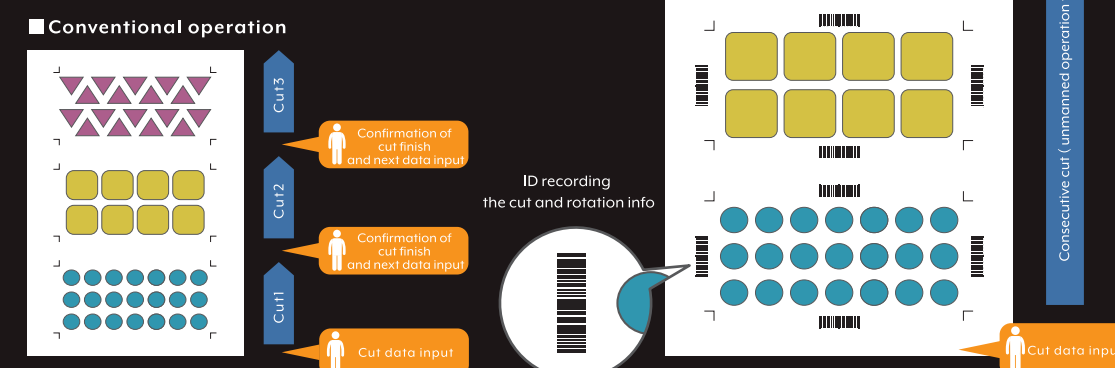
\* Preview cannot completely show the same with the practical print image.

## Immediate materializing an image idea by Print & Cut

[UCJV300/150-160] is equipped with cutting function of high performance and high efficiency to be able to make labels, stickers and car wrapping film by one unit only.

## [ID Cut] can help to cut easily even for multiple types data of small lot of each.

[ID Cut] is to print together ID (Barcode) for recognition of cutting details and media rotation with crop marks while placing the crop mark on the RIP. And then cut data of every print data is readable to start cutting automatically. Then with this function, cutting starts without any respective cutting order by operator at RIP software. It saves media losses by failure of data transmission.



## Continuous registration mark detection

Continuous reading of registration marks arranged on the RIP and revision of cutting position based on the read marks for accurate cut.

## Print & Cut without registration marks

Cutting is available without registration marks for minimum loss of media.

## Intermediate registration mark detection

For a correct cut of long outline by multiple corrections of position with intermediate registration marks.



## Newly developed environmentally friendly UV ink, [LUS-170]

Newly developed ink, [LUS-170] adaptive to environment, generates hardly VOC and can cure without the irradiation of short wavelength UV causing ozone. [LUS-170] yellow ink is eco-friendly and nickel free though general yellow inks are compounding it. [LUS-170] acquired the [GREENGUARD Gold] certification, which is based on most strict global standard of chemical substance diffusion, assuring the product property conforms to schools and medical facilities. It is surely considered to environment and safety.

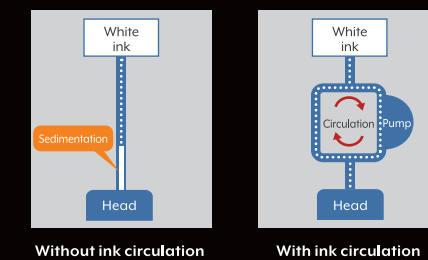


## Ecology by the newly developed ink

## MCT (Mimaki Circulation Technology) \* = Ink circulation system, which allows stable printing

Mounted [MCT] of periodical white ink circulation suppressing the sedimentation of pigment. Preventing the ink trouble and it supports stable printing from starting of printer. Moreover MCT can contribute to the control of ink waste, too, to be effective environmentally and economically.

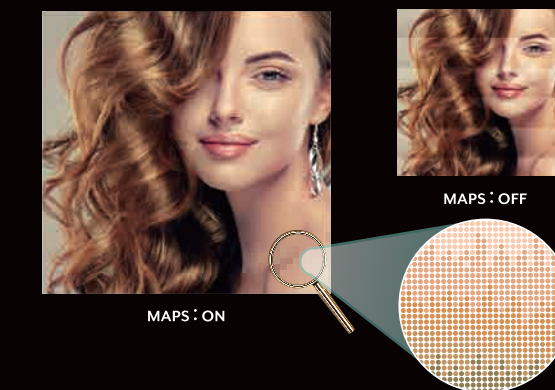
\* MCT is available only to white ink.



## [MAPS4\*] to reduce banding

MAPS function makes the banding less visible by dispersing pass boundaries or getting in gradation-like where the banding is conspicuous while printing. It can reduce generation of banding and uneven color.

\* MAPS4 = Mimaki Advanced Pass System4



## Mimaki's print technology in pursuit of essential beauty

## Mimaki Waveform Control Technology for high quality print

By Mimaki's originally advanced ink discharging control, jetting ink drops in straight with almost a perfect circle dots to accomplish high accuracy dot placement to the media. Thanks to apply UV ink of instant curing, very fine line for maps can be expressed sharply without bleeding.



## [NRS\*] maintains the productivity

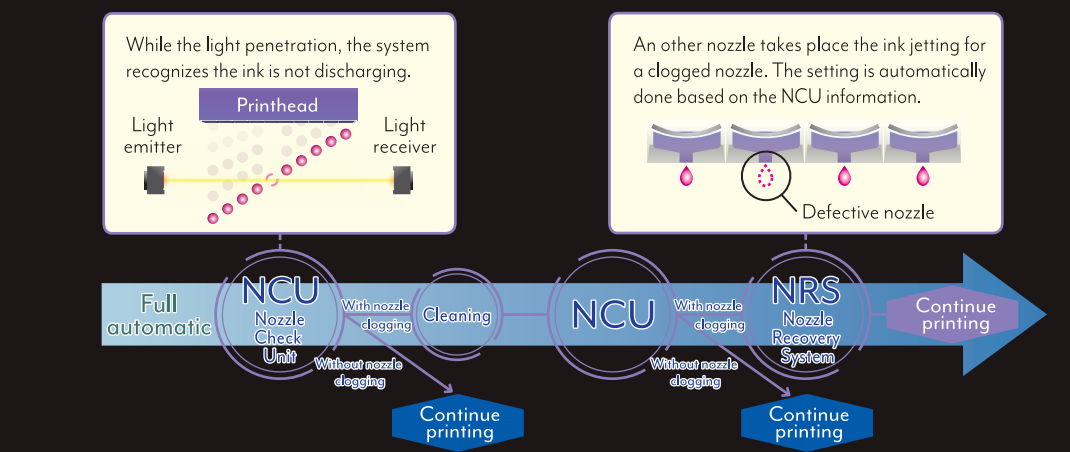
[NRS] is mounted as when a problem occurs in some nozzles, other nozzles will take place to continue to print. Without the stop operating of wait of arrival of service staff, the productivity is maintained.

\* NRS = Nozzle Recovery System

## Preventing print failure by [NCU\*]

Mimaki original system [NCU] is mounted to check the nozzle status automatically. When a nozzle clogging is found, auto cleaning is executed to eliminate it. If it does not help, NRS performs to recover the nozzle automatically to restart the print. Suppressing to the minimum media loss due to nozzle-out while continuous printing.

\* NCU = Nozzle Check Unit



## Business solution not interfering by continuous running